

Winter Itinerary

Maggie Valley, NC

Experience a winter getaway in the invigorating mountain air with new fallen snow!



Family fun for all ages -- relive the days of childhood sledding. This tubing sport is fun for the entire family. Zip down the mountain on snow then let a carpet lift carry you back up the mountain so you can do it all over again. Tube World in Maggie Valley is open from mid-December through the first of March, weather permitting. If there isn't natural snow, they make snow. This is a fun way to work off all those breakfast calories. Sessions last one hour and forty five minutes.

1080 Ski Lodge Road

Kickstart your day with a hearty breakfast in downtown Maggie Valley!



How many vacation spots have a mom and pop restaurant that has been in business 48 years? Serving up world famous signature pancakes made from special recipes, country ham, and golden waffles, Joey's Pancake House has been a favorite breakfast stop for visitors and locals since 1966.

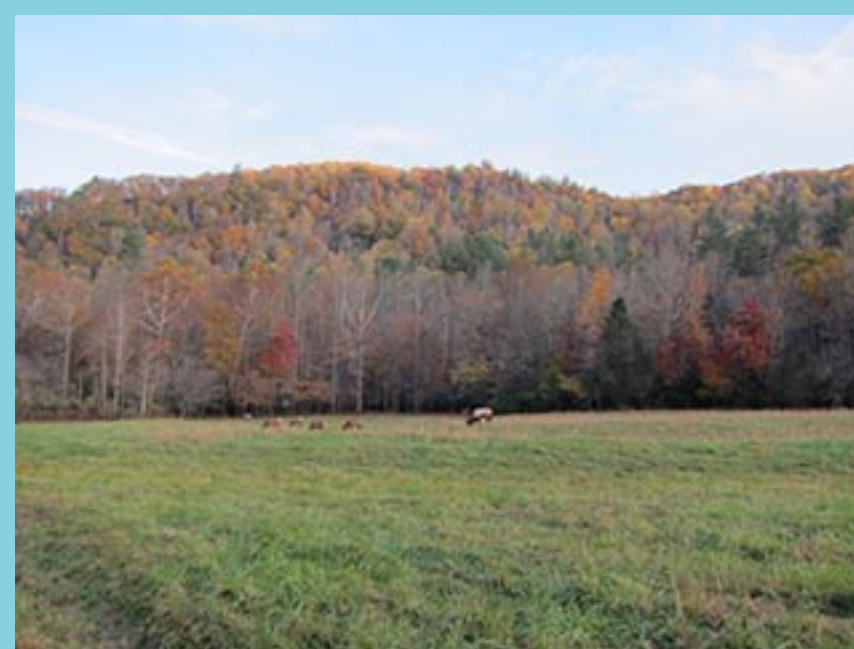
4309 Soco Road

Hit the Slopes



Gear up at Cataloochee Ski Area for a day on the slopes. Rent snowboards, skis, helmets, bib overalls and jackets at the sports shop. Slopes open at 9am. Night skiing is offered until 10pm on weekends. Located at 1080 Ski Lodge Road.

View wildlife, historic structures, and awesome views in Cataloochee Valley



Cataloochee Valley is nestled among some of the most rugged mountains in the southeastern United States. Here you will find elk grazing in the fields and historic buildings that have been preserved.

Surrounded by 6,000-foot peaks, this isolated valley was the largest and most prosperous settlement in what is now Great Smoky Mountains National Park. Once known for its farms and orchards, today's Cataloochee is one of the most picturesque areas of the park.

The mountain vistas as you travel from the highway to Cataloochee are breathtaking. The road is narrow and pullovers are few, so you will need to drive slowly and take in the views.

Directions: From Maggie Valley turn left onto Highway 276 N. just before the entrance ramp to I-40 (but past the gas station). Turn left and follow the signs 11 more miles to Cataloochee. Be sure to take your cameras!



Complete your day at J. Arthur's Restaurant

A day in Maggie Valley isn't complete until you spend time at J. Arthur's with locals and other tourists. Since 1986 this world-famous restaurant has served up some of the finest food in the South.

Start with a tasty appetizer -- choose from jumbo shrimp cocktail, buffalo wings, homemade French onion soup, award-winning cheese sticks, Carolina cheese fries, or J. Arthur's popular onion rings.

A few favorite entrees include prime rib, steaks, bass, shrimp and grits, salmon, ribs, and slow roasted meatloaf. Also on the menu is lobster tails or Surf and Turf.

From the grill, you can select from pork sandwich, burger, Philly cheese steak, chicken strips, fish and chips, or a combo plate with fried shrimp, cheese sticks, ribs, and wings.

A kid's menu aims to please even the pickiest of eaters.

Winter Itinerary in Maggie Valley

@ 2014 by Image Builders • www.imagesbuilder.com and featured on www.aboutmaggievalley.com. All rights reserved.